

October 25, 2024

TO ALL BIDDERS OF RECORD:

This Addendum forms a part of the Contract Documents and modifies the Drawings and Project Manual as hereinafter indicated.

1) BIDDER QUESTIONS – Please note that the RFI inquiry period is now closed.

1. Refer to Spec Section 33 32 16 and Drawing C009 of Addendum 6. Please confirm that the Packaged Wastewater Grinder Pump Assembly and all associated work will not apply to the Base Bid Due on October 31, 2024.?

Response: The packaged wastewater grinder pump assembly and associated site work DOES apply to the base bid due on 10/31/24.

2. Who is responsible for the gas line from the existing generator to the new storage building?

Response: The gas line from the existing building (bypasses the generator) to the new accessory building is under the general contractor's scope of work.

3. Addendum #6 adds a Grinder Pump to the project. The note on revised plan C004 says "ELECTRIC SERVICE LINE TO PUMP AND E/ONE SENTRY ALARM PANEL – SEE ELECTRICAL PLANS FOR WIRING DETAILS", however there is no electrical plan with wiring details included. Will wiring plans be issued for the electrician?

Response: Additional electrical work will be addressed after the general contractor is awarded.

4. The electrical filed sub-bidder has already submitted his sub pricing how will the changes to the electrical scope be priced for this change?

Response: See response #3.

5. Will the alarm monitoring station for the Grinder Pump be an exterior panel or an interior panel?

Response: Interior. See attached sketch SKA-4 for panel location. See response #3 for associated work.

2) DRAWINGS

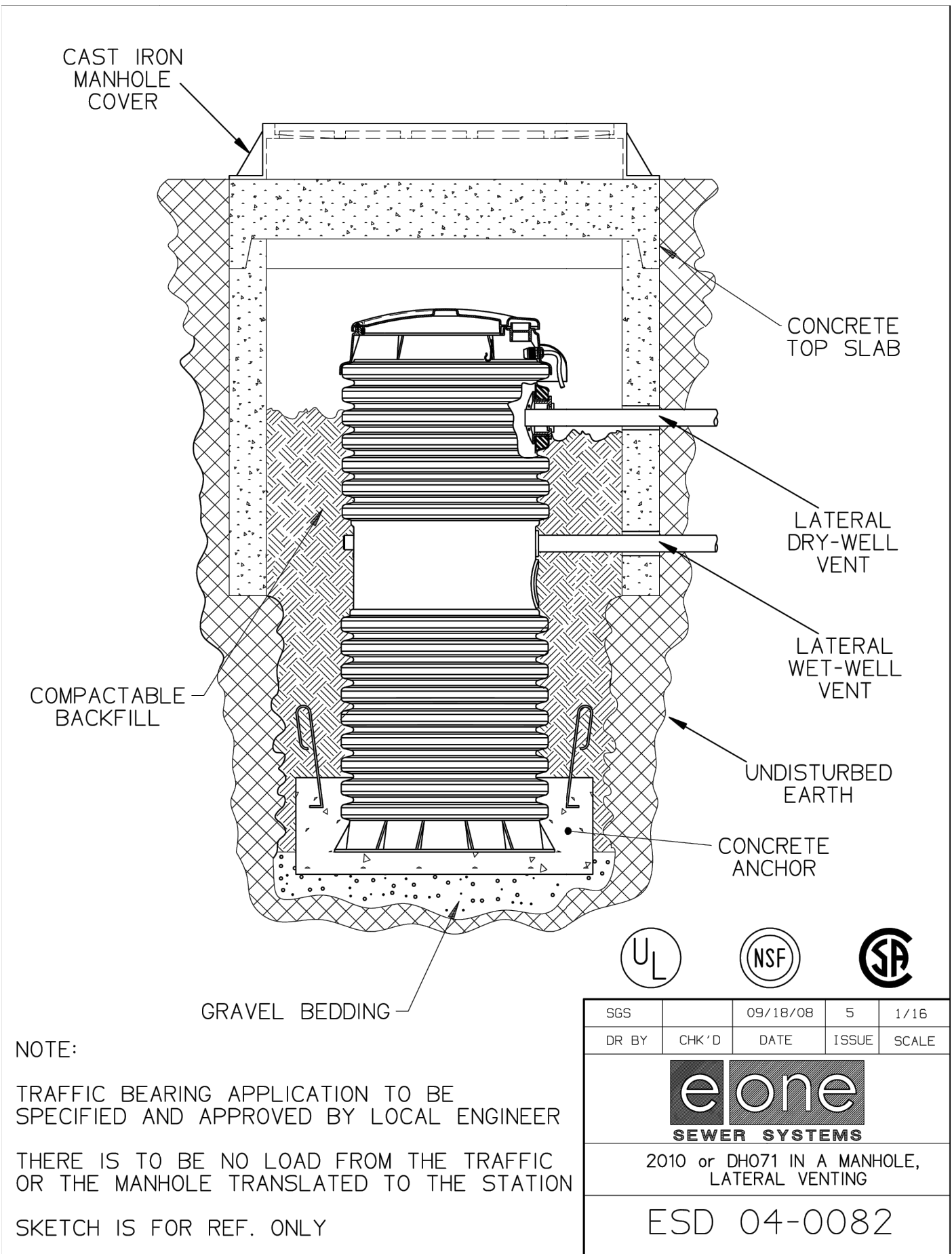
ADD the following drawing sketches 10-24-2024:

1. SK-1 GRINDER PUMP IN MANHOLE LATERAL VENTING
2. SKA-4 ALARM PANEL LOCATION

3) ATTACHMENTS

1. SK-1 GRINDER PUMP IN MANHOLE LATERAL VENTING
2. SKA-4 ALARM MONITORINGPANEL LOCATION

(THIS COMPLETES ADDENDUM NO. 7)



This drawing is copyrighted and is subject to copyright protection as an "architectural work" under 17 U. S. C. Sec. 101 et seq. The protection includes but is not limited to the overall form as well as the arrangement and composition of spaces, materials, color and elements in the design. Under such protection, unauthorized use of this drawing may result in the cessation of construction or buildings being seized and/or monetary compensation being awarded to The Robinson Green Beretta Corporation (RGB). Any reproduction, possession, or use of this drawing or any part thereof without the express written permission of RGB, is prohibited. Violators will be prosecuted to the full extent of the law.

© RGB 2024

Certification

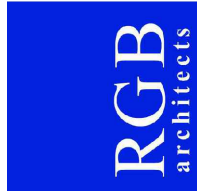


InSite Professional Complex, Suite 1 -1539 Fall River Avenue Seekonk, MA 02771
Phone: (508) 336-4500 Fax: (508) 336-4558 - Web Address: InsiteEngineers.com

50 Holden Street
Providence, Rhode Island 02908

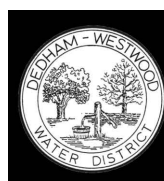
Phone: (401) 272-1730
Fax: (401) 273-7156

E-mail: rgbinfo@rgb.net
www.rgb.net



Architecture · Project Management · Interior Design

Project DEDHAM- WESTWOOD
WATER DISTRICT STORAGE
FACILITY



50 ELM STREET, DEDHAM, MA 02026

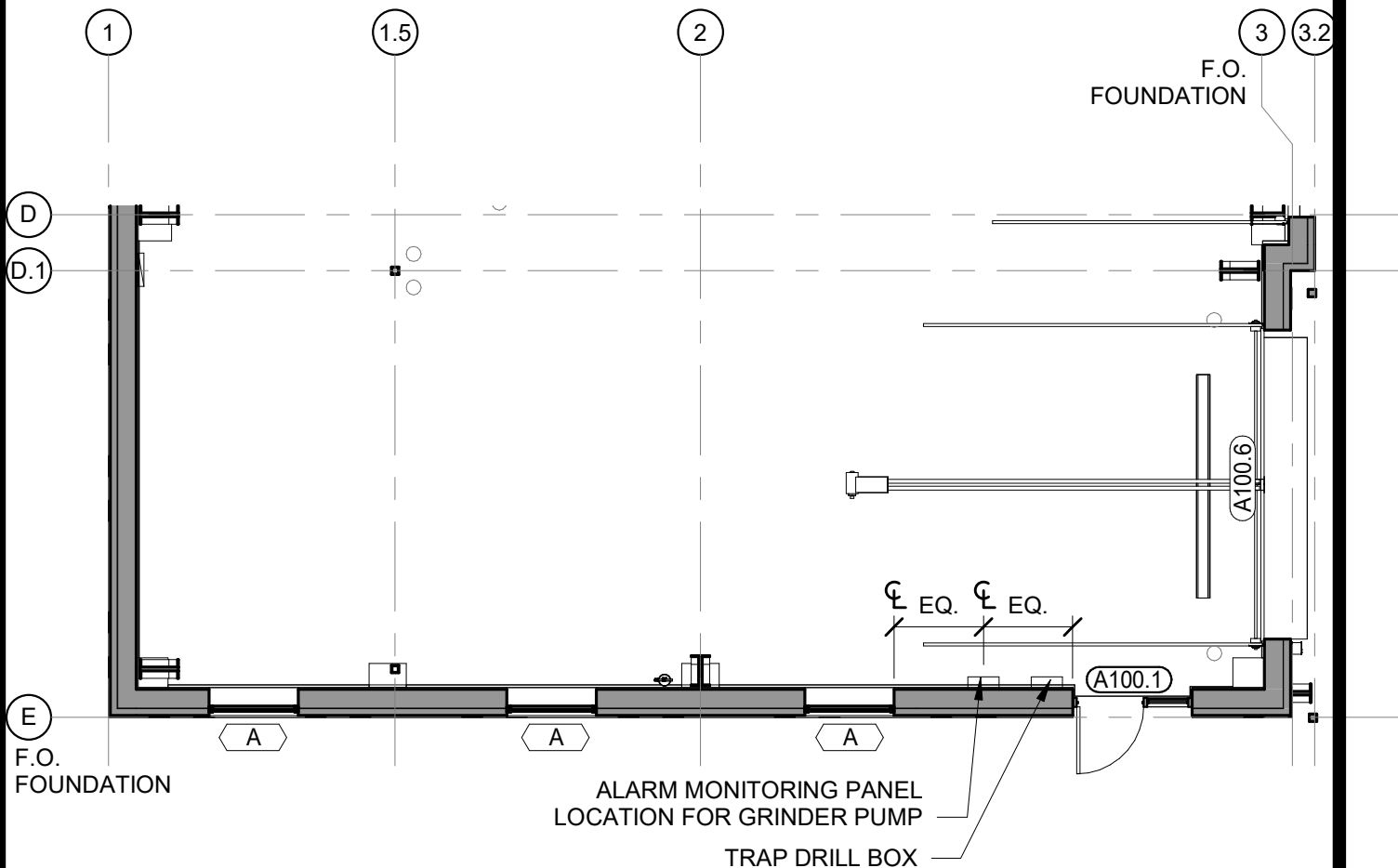
Sheet Contents

Drawing No.

SK-1

Issued On 10/24/2024

Project Number. 6790



1 ALARM PANEL LOCATION

SKA-4 Scale: 1/8" = 1'-0"

50 Holden Street
Providence, Rhode Island 02908

Phone: (401) 272-1730
Fax: (401) 273-7156

E-mail: rgbinfo@rgb.net
www.rgb.net

Architecture · Project Management · Interior Design



Project

STORAGE FACILITY
AND SITE
IMPROVEMENTS

Contents

ALARM PANEL
LOCATION

Project No. 6790

Checked by JRR

Issued 09/27/24

Drawing No.

SKA-4

Sheet of